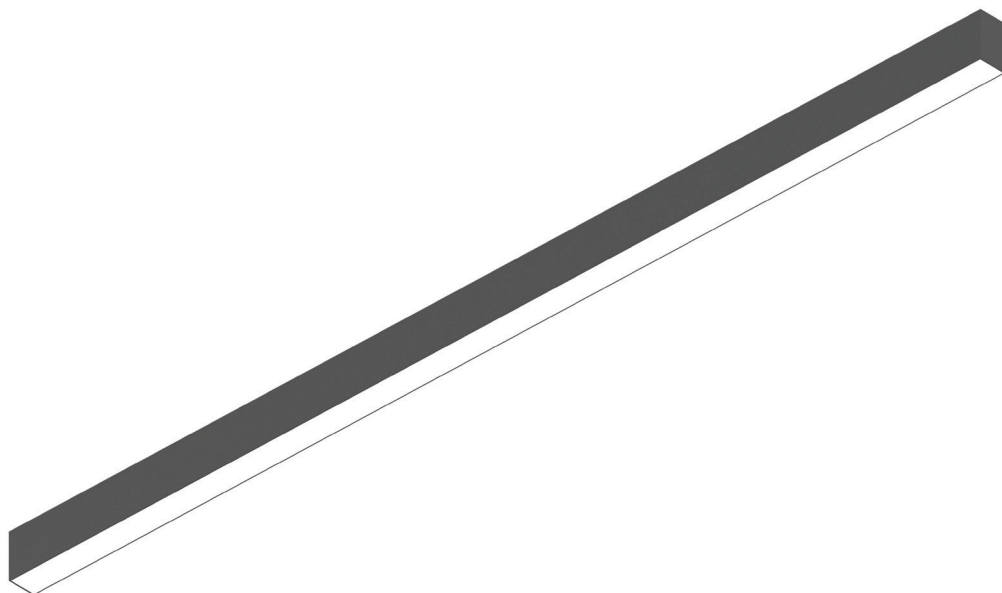


ideal lux | Fluo Bi-emission



LINEAR SYSTEM

Linear system of lamps with extruded aluminum body with a 50 mm wide and 80 mm high section, modules available in two lengths: 1200 mm and 1800 mm, which can be assembled according to the desired arrangement, possibility of assembling three different source modules: the WIDE diffusing module, the BIEMISSION module with light component for indirect lighting and the ACCENT module with UGR control lower than 19, integrated LEDs, color temperature options of 3000K or 4000K, starting binning ≤ 3 -Step MacAdam, minimum 80% of luminous flux remaining after 30000 h duration, IP20 protection, insulation class I.

The system is available in anodized aluminum, white and black colors and it is possible to install it in different ways: ceiling-mounted or flush-mounted in plasterboard ceilings. Driver included, integrated in the lighting fitting, available in both DALI and 1-10V dimmable versions. System suitable for locations where professional lighting with minimal design is required, such as OFFICES and SHOPS.

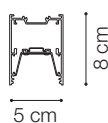
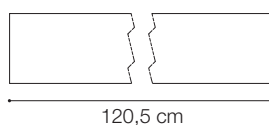


Suggestion



Suggestion

Code	192710
Item name	FLUO BI-EMISSION 1200 3000K BLACK
Source	LED SMD SAMSUNG
Power	26W 13W
Driver included	TRIDONIC
Driver available	1-10V DALI
Lumen	2800 Lumen 1900 Lumen
MacAdam	3SDC
Beam	105° 105°
CCT	3000K
CRI	≥ 83
UGR	<27
LED Life	30.000 h
Insulation class	Class I
IP	20
Material	Aluminum
Warranty	5 years
Net Weight	2,890 Kg
Volume	0,0251 m ³
Dimmable	On request
Customizable	Yes



ideal lux | Fluo Bi-emission

**MOUNTING KIT
NOT INCLUDED | REQUIRED**

Code 191164
Item name FLUO KIT PENDANT BK
Length 170 cm

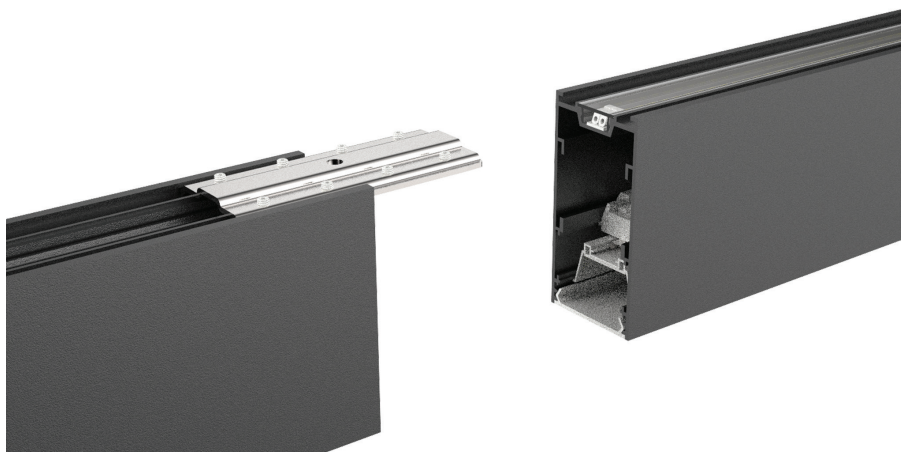


ideal lux | Fluo Bi-emission

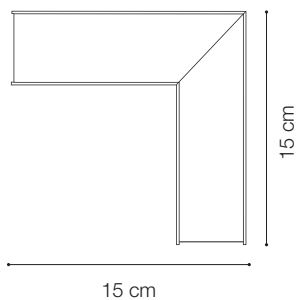
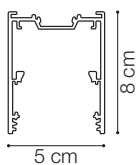
NOT INCLUDED | OPTIONAL



Code 191508
Item name FLUO PROFILE CONNECTOR



Code 191492
Item name FLUO CORNER BLINDED BK
Material Aluminum
Warranty 5 years
Net Weight 0,610 Kg
Volume 0,0023 m³



ideal lux | Fluo Bi-emission

DRIVER
NOT INCLUDED | OPTIONAL

Code	216447
Item name	FLUO DRIVER 1-10V 300mA
Power	17W
Output	27/56 Vdc
Current	300 mA
Measure	280 x 30 x 21 mm

Code	216300
Item name	FLUO DRIVER DALI 250mA
Power	14W
Output	20/54 Vdc
Current	250 mA
Measure	280 x 30 x 21 mm