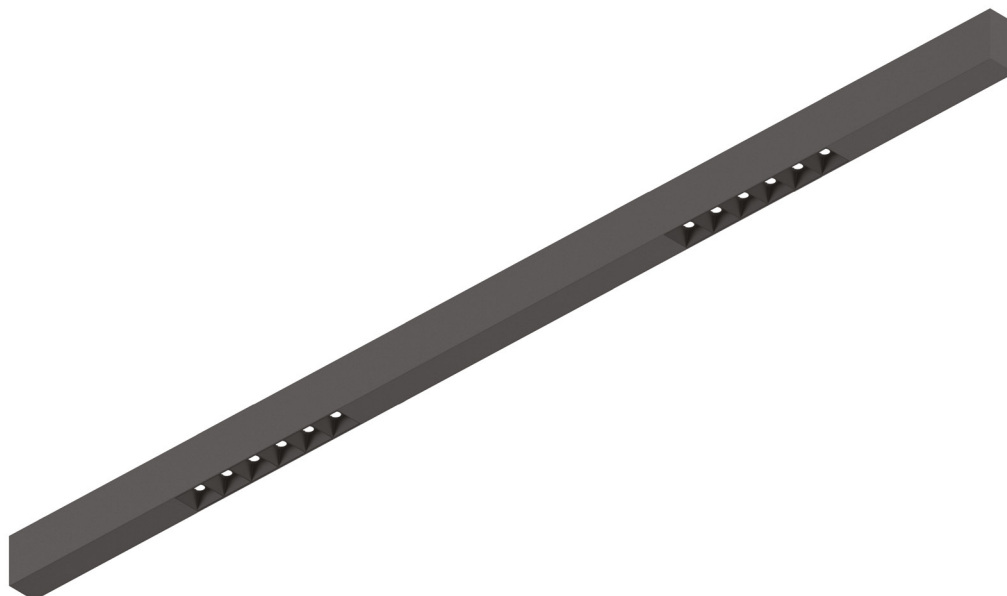


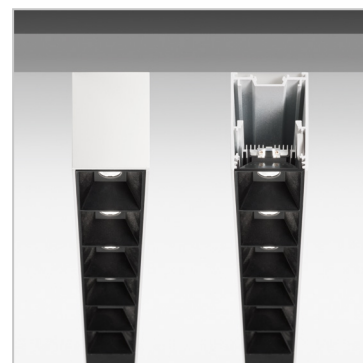
# ideal lux | Fluo Accent



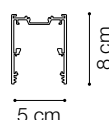
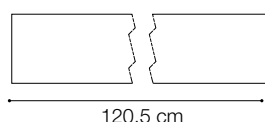
## LINEAR SYSTEM

Linear system of lamps with extruded aluminum body with a 50 mm wide and 80 mm high section, modules available in two lengths: 1200 mm and 1800 mm, which can be assembled according to the desired arrangement, possibility of assembling three different source modules: the WIDE diffusing module, the BIEMISSION module with light component for indirect lighting and the ACCENT module with UGR control lower than 19, integrated LEDs, color temperature options of 3000K or 4000K, starting binning  $\leq 3$  -Step MacAdam, minimum 80% of luminous flux remaining after 30000 h duration, IP20 protection, insulation class I.

The system is available in anodized aluminum, white and black colors and it is possible to install it in different ways: ceiling-mounted or flush-mounted in plasterboard ceilings. Driver included, integrated in the lighting fitting, available in both DALI and 1-10V dimmable versions. System suitable for locations where professional lighting with minimal design is required, such as OFFICES and SHOPS.



Code	192529
Item name	FLUO ACCENT 1200 4000K BK
Source	LED COB CREE
Power	30W
Driver included	TRIDONIC
Driver available	1-10V   DALI
Lumen	3300 Lm
MacAdam	SDCM 3
Beam	30°
CCT	4000K
CRI	$\geq 83$
UGR	<19
LED Life	30.000 h
Insulation class	Class I
IP	20
Material	Aluminum
Warranty	5 years
Net Weight	2,760 Kg
Volume	0,0251 m <sup>3</sup>
Dimmable	On request
Customizable	Yes



# ideal lux | Fluo Accent

**MOUNTING KIT  
NOT INCLUDED | REQUIRED**

Code 191164  
Item name FLUO KIT PENDANT BK  
Length 200 cm  
Cup Yes  
Code 215891  
Item name FLUO KIT PENDANT BK  
Length 500 cm  
Cup Yes



Code 220826  
Item name FLUO KIT PENDANT SINGLE CABLE 2 MT  
Length 200 cm  
Cup No  
Code 243665  
Item name FLUO KIT PENDANT SINGLE CABLE 5 MT  
Length 500 cm  
Cup No



Code 191188  
Item name FLUO KIT RECESSED



Code 191171  
Item name FLUO KIT SURFACE

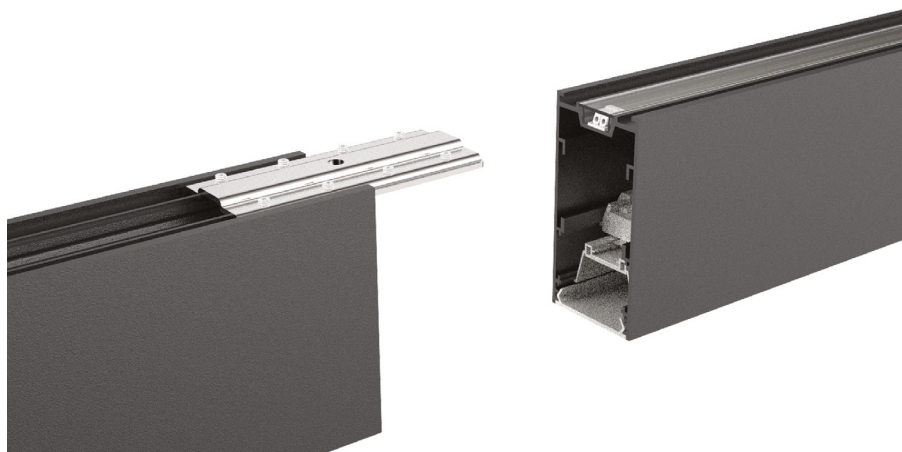


# ideal lux | Fluo Accent

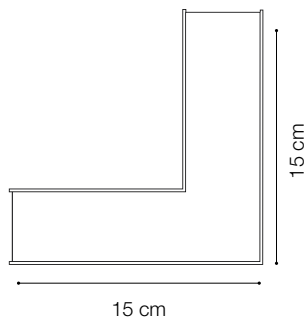
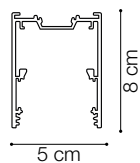
NOT INCLUDED | OPTIONAL



Code 191508  
Item name FLUO PROFILE CONNECTOR



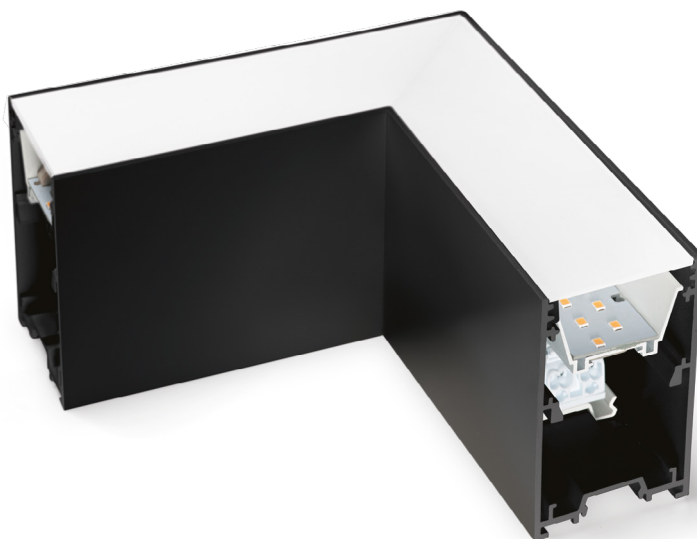
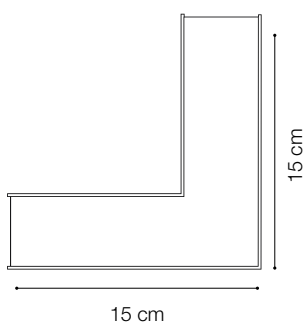
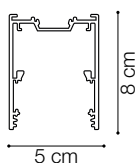
Code 191492  
Item name FLUO CORNER BLINDED BK  
Material Aluminum  
Warranty 5 years  
Net Weight 0,610 Kg  
Volume 0,0023 m<sup>3</sup>



# ideal lux | Fluo Accent

NOT INCLUDED | OPTIONAL

Code	191461
Item name	FLUO CORNER 4000K BK
Material	Aluminum
Warranty	5 years
Net Weight	0,580 Kg
Volume	0,0023 m <sup>3</sup>



Code	216416
Item name	FLUO DRIVER 1-10V 39W
Power	39 W
Output	700 mA
Measure	280 x 30 x 21 mm



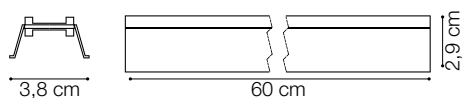
Code	216270
Item name	FLUO DRIVER DALI 38W
Power	38W
Output	700 mA
Measure	280 x 30 x 21 mm



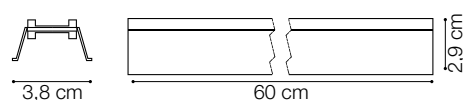
# ideal lux | Fluo Accent

NOT INCLUDED | OPTIONAL

Code	198675
Item name	FLUO MODULO WIDE 08W 4000K 12V
Material	Aluminum
Power	8 W
Beam	105°
Flux	1150 Lm
CCT	4000 k
Volt	12 Vdc
Warranty	5 years
Net Weight	0,300 Kg
Volume	0,0007 m <sup>3</sup>



Code	198682 / 198712
Item name	FLUO MODULO WIDE 13W 4000K 24V / 48V
Material	Aluminum
Power	13 W
Beam	105°
Flux	1750 Lm
CCT	4000 k
Volt	24 Vdc
Warranty	5 years
Net Weight	0,300 Kg
Volume	0,0007 m <sup>3</sup>



Code	199030
Item name	FLUO MODULO ACCENT 13W 4000K
Material	Aluminum
Power	13 W
Beam	30°
Flux	1650 Lm
CCT	4000 k
Warranty	5 years
Net Weight	0,300 Kg
Volume	0,0007 m <sup>3</sup>

